



Nature  
Conservation Agency  
Republic of Latvia

# **Assessment of ecosystem services on national scale. Latvia.**

Andris Širovs,  
Director of Pierīga Regional Administration  
Nature Conservation Agency of Republic of Latvia

Vilnius, 27.02.2019



Nature  
Conservation Agency  
Republic of Latvia

## **The state of national MAES process in Latvia**

- 1) There isn't a plan for MAES process at national scale;**
- 2) Mostly evaluation of ecosystem services is based on separate projects - in project's pilot territories;**
- 3) In some cases results of evaluation of ecosystem services are integrated in some planning documents – spatial plans (marine and terrestrial) and management plans of protected areas.**

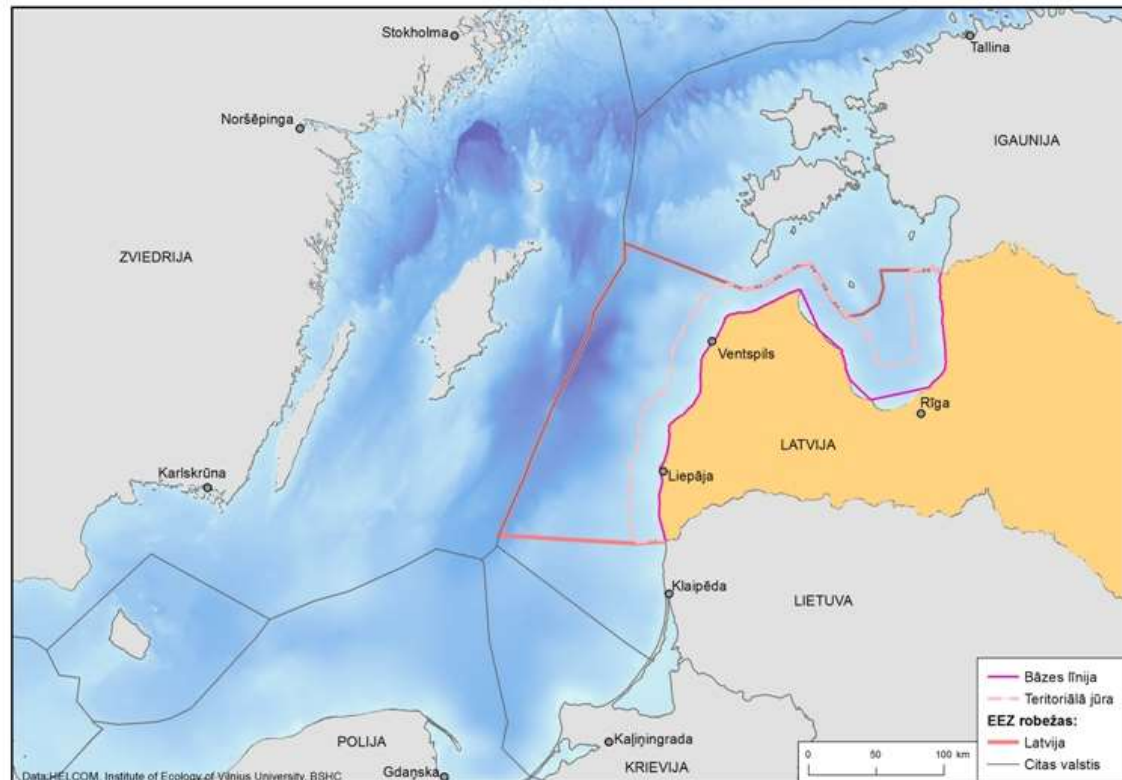


Nature  
Conservation Agency  
Republic of Latvia

# Examples

## Mapping marine ES in Latvia –

The study area includes all marine waters under jurisdiction of the Republic of Latvia including the internal marine Waters, territorial waters and Exclusive Economic Zone.





Nature  
Conservation Agency  
Republic of Latvia

# Examples

## 1) Mapping marine ES in Latvia – type of ES / methods used in the study

Ecosystem Service selected for mapping and assessment	B	S	E
1.1.1.3 Wild plants, algae and their outputs*	X		
1.1.1.4 Wild animals and their outputs	X		
2.1.1.1 Bio-remediation by micro-organisms, algae, plants, and animals	X		
2.1.1.2 Filtration/sequestration/storage/accumulation by micro-organisms, algae, plants, & animals.	X		
2.2.1.1 Mass stabilization and control of erosion rates	X		
2.3.1.2 Maintaining nursery populations and habitats*	X		
2.3.5.1 Global climate regulation by reduction of greenhouse gas concentrations	X		
3.1.1. Experiential and physical use of plants, animals and landscapes /seascapes in different environmental settings *	X		

\* ES selected for further discussion during ESMERALDA workshops 3 in Prague.

B = biophysical methods; S = socio-cultural methods; E = economic methods.

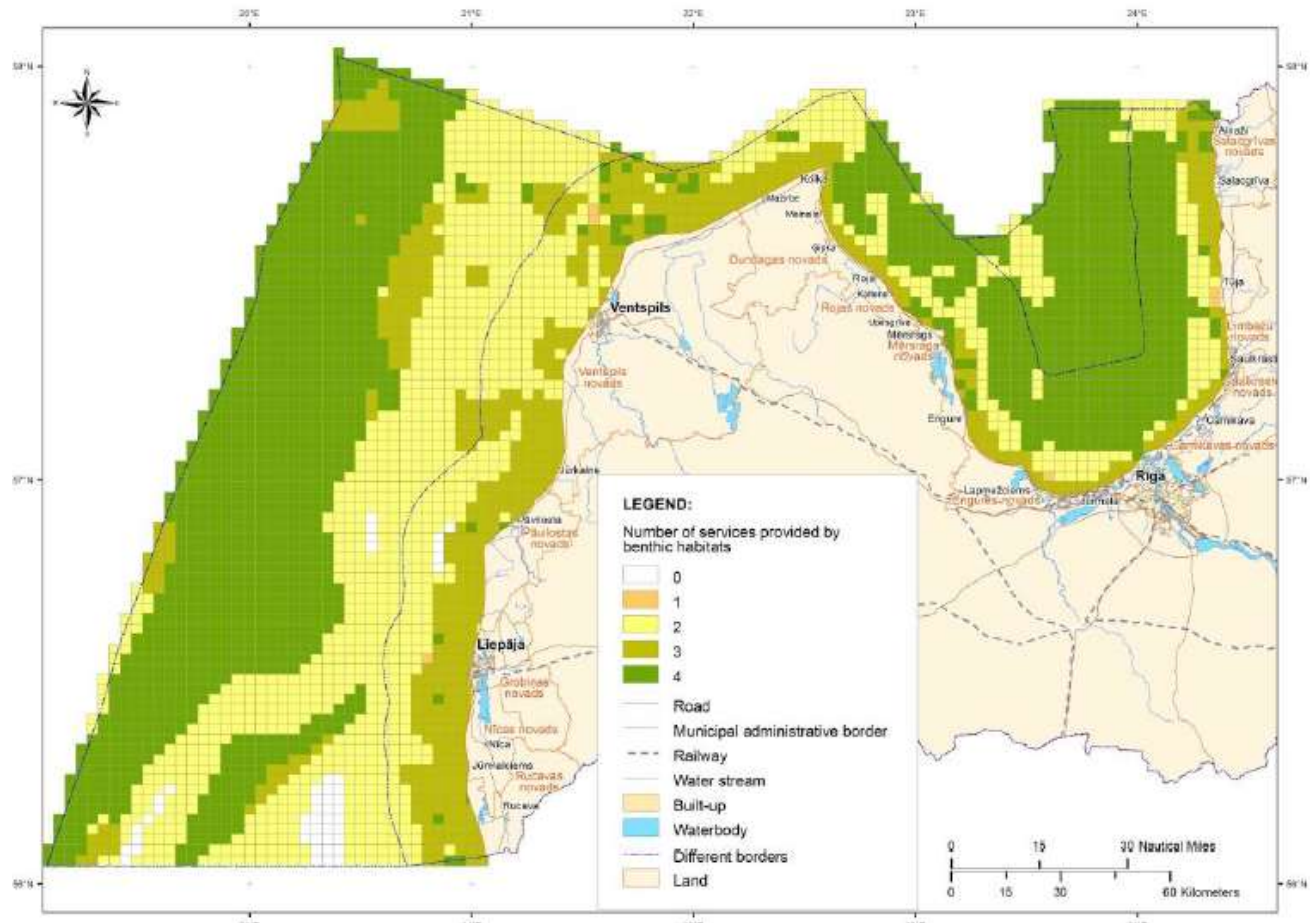


Nature  
Conservation Agency  
Republic of Latvia

# Examples

## 1) Mapping marine ES in Latvia – results

Number of  
regulating and  
maintenance  
ES provided by  
benthic habitats



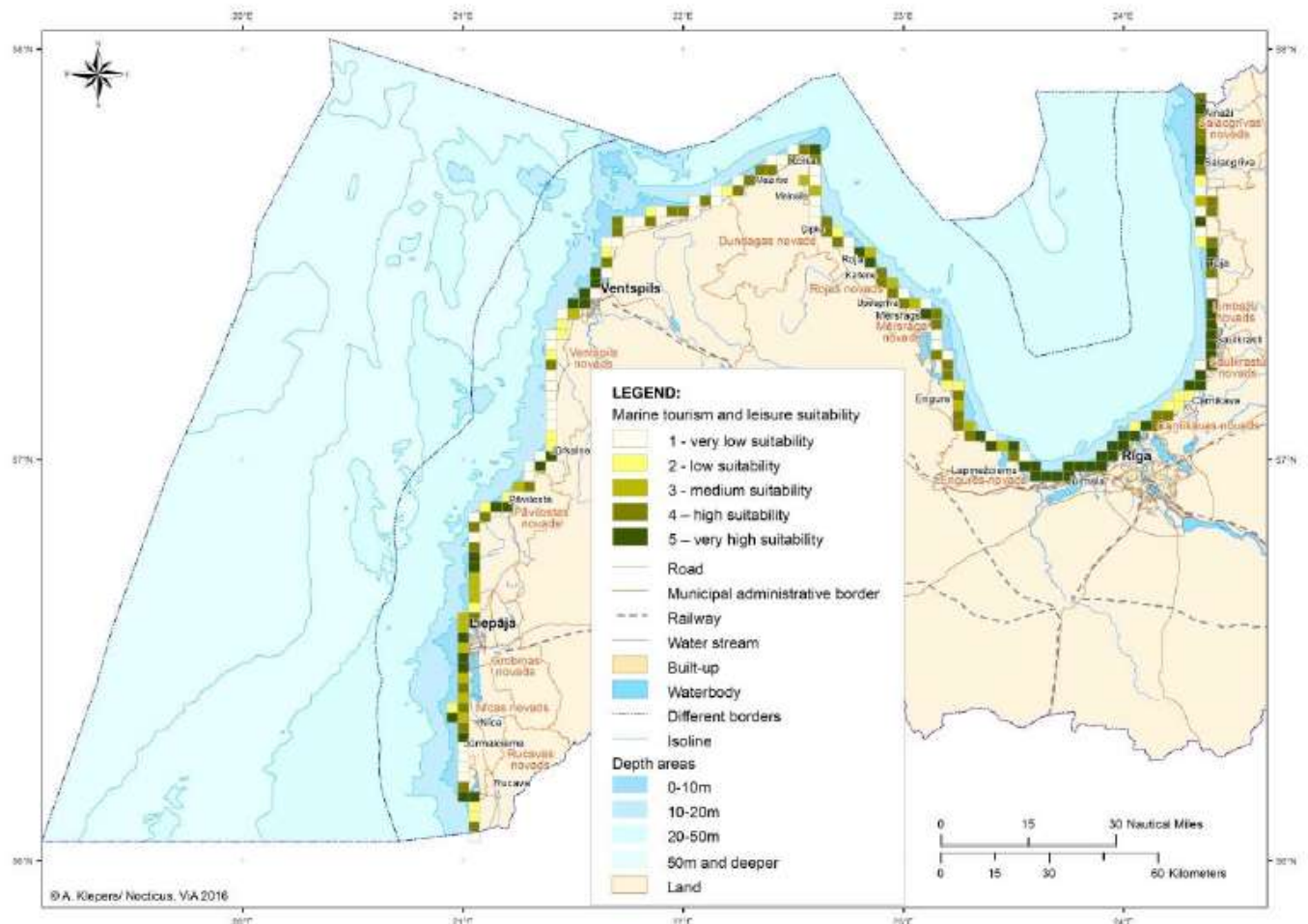


Nature  
Conservation Agency  
Republic of Latvia

# Examples

## 1) Mapping marine ES in Latvia – results

Number of cultural ES provided by benthic habitats (marine tourism and leisure possibilities)





## Examples

### 2) Mapping of ES in Nature Reserve «Laugas purvs» - as a part of management plan of PA

ES evaluated in  
Nature reserve  
(total 31 ES);  
method –  
experts  
evaluation

ES category	Group	Class	Indicators
Provisioning	Biomass	Wild flora & fauna	Amount, type
	Water	Freshwater source	Water consumption
	Energy	Wild plants	Material by type and source
Regulation & maintenance	Transformation & regulation of inputs in ecosystem	Filtration, sequestration Bio-remediation etc.	Water flow maintenance, Pest control etc.
Cultural	Physical & experimental interaction with nature		Bird watching, Recreation, Environmental education possibilities

Aktivitātes tiek īstenotas ar Eiropas Savienības LIFE programmas un Latvijas vides aizsardzības fonda administrācijas finansiālu atbalstu projekta "Degradēto purvu atbildīga apsaimniekošana un ilgtspējīga izmantošana Latvijā" (LIFE REstore, LIFE14 CCM/LV/001103) ietvaros.



Nature  
Conservation Agency  
Republic of Latvia

# Examples

## 2) Mapping of ES in Nature Reserve «Laugas purvs» - results

Maps of ES  
evaluated by  
category and  
No. of ES  
provided in the  
territory





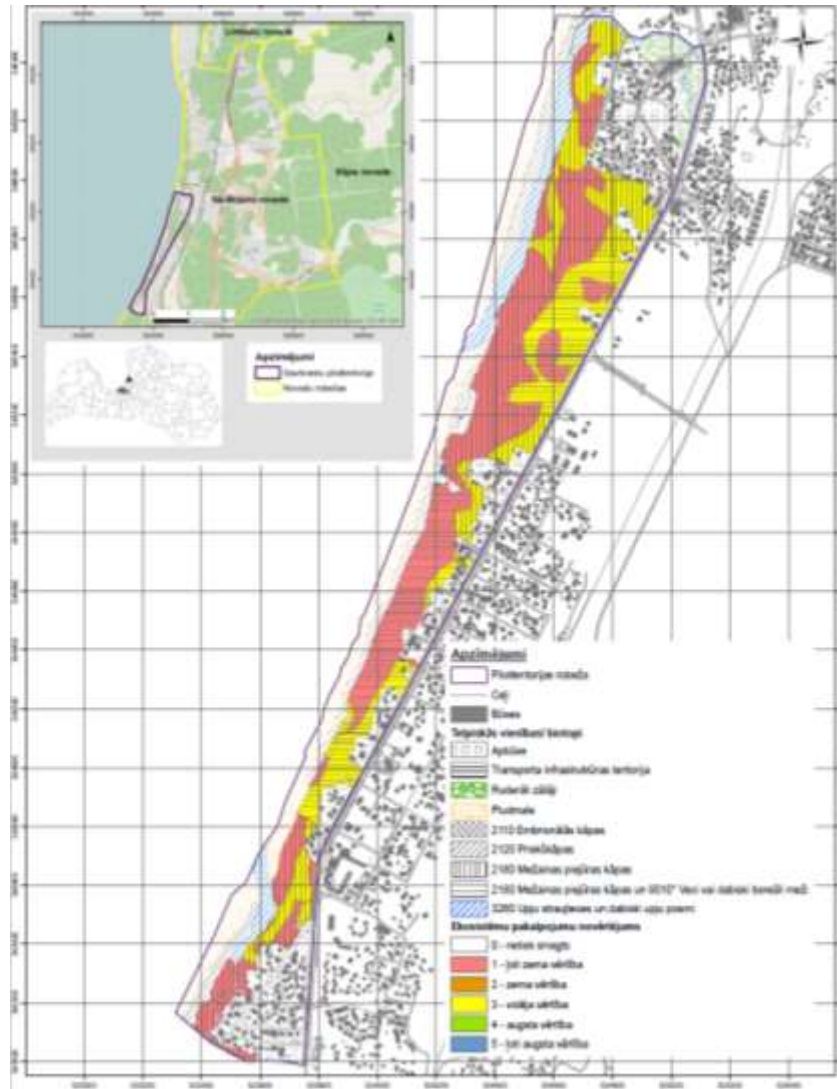


Nature  
Conservation Agency  
Republic of Latvia

## Examples

### 3) Mapping of ES in Nature Park «Piejūra» – a base for future park's development

Number of ES provided in the territory based on habitats type and quality

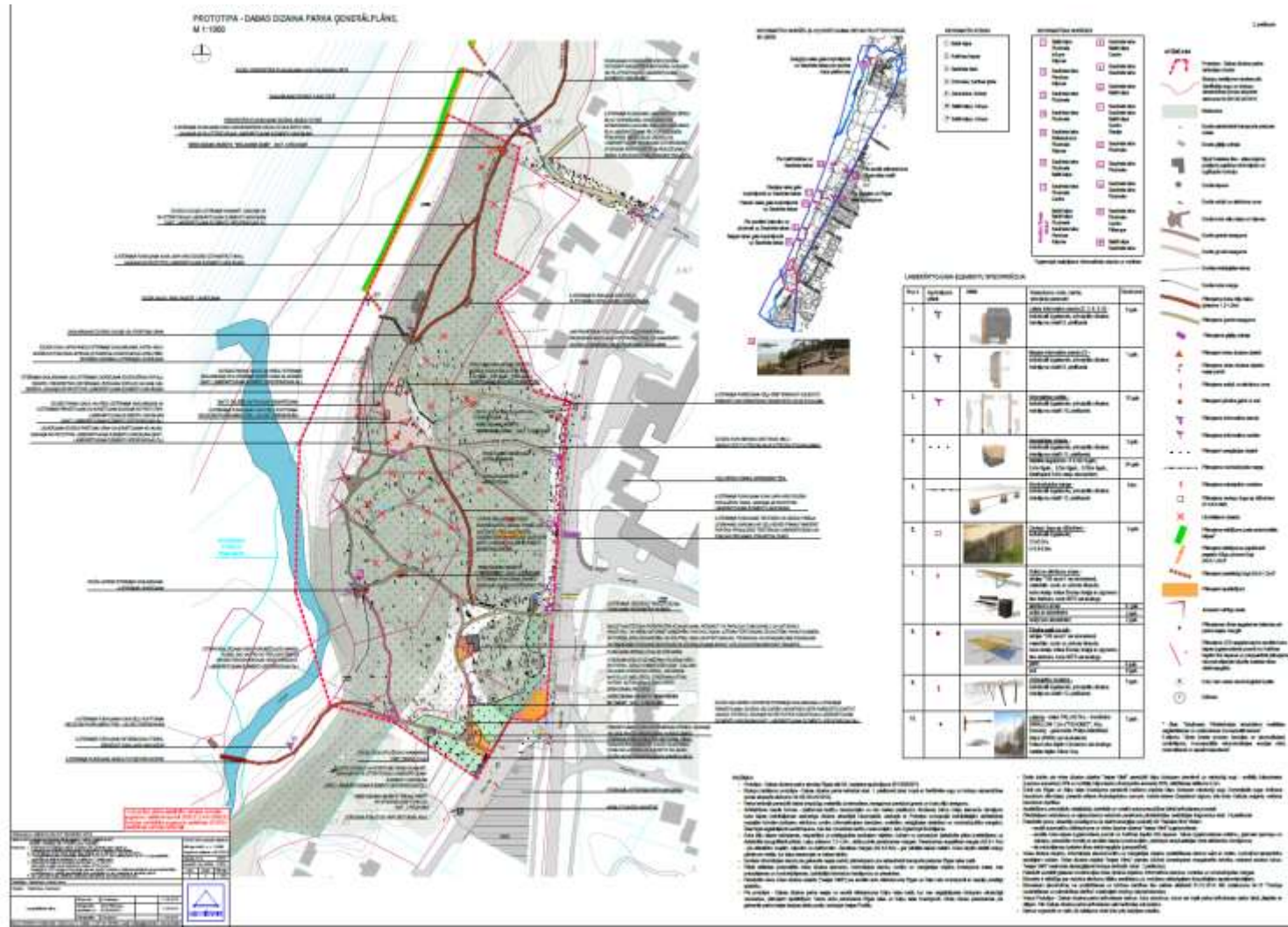




Nature  
Conservation Agency  
Republic of Latvia

# Examples

## 3) Mapping of ES in Nature Park «Piejūra» – result – a project's prototype «Design park»





Nature  
Conservation Agency  
Republic of Latvia

## Conclusions from LV

- 1) Mapping of all ES isn't done at national level;**
- 2) No «legal binding» regulation on place to proceed MAES process at national level;**
- 3) Mostly evaluation of ES is based on separate projects;**
- 4) ES evaluation is done in separate project's pilot territories;**
- 5) Existing experience of evaluation of ES in LV covers marine, grasslands, forests, coastal and bog habitats.**



Nature  
Conservation Agency  
Republic of Latvia

**Thank you for your  
attention!**