



Nature
Conservation Agency
Republic of Latvia

Sustainable and responsible management and re-use of degraded peatlands in Latvia – LIFE REstore

Kaspars Pabērzs
LIFE REstore project manager

21.09.2016, Ventainē



Latvijas
vides
aizsardzības
fonds

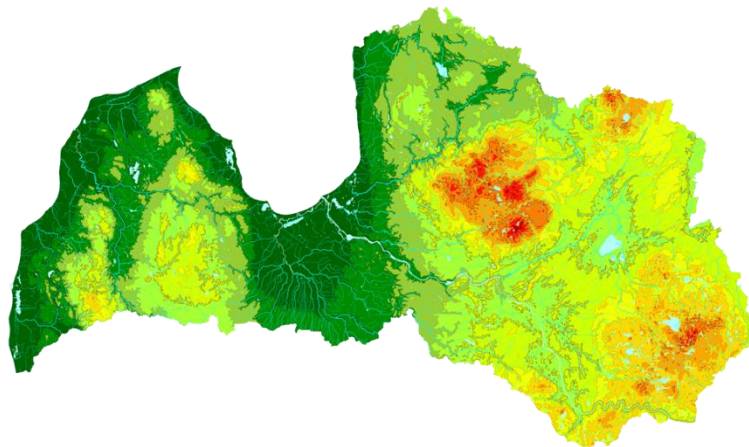




Nature
Conservation Agency
Republic of Latvia

General Information

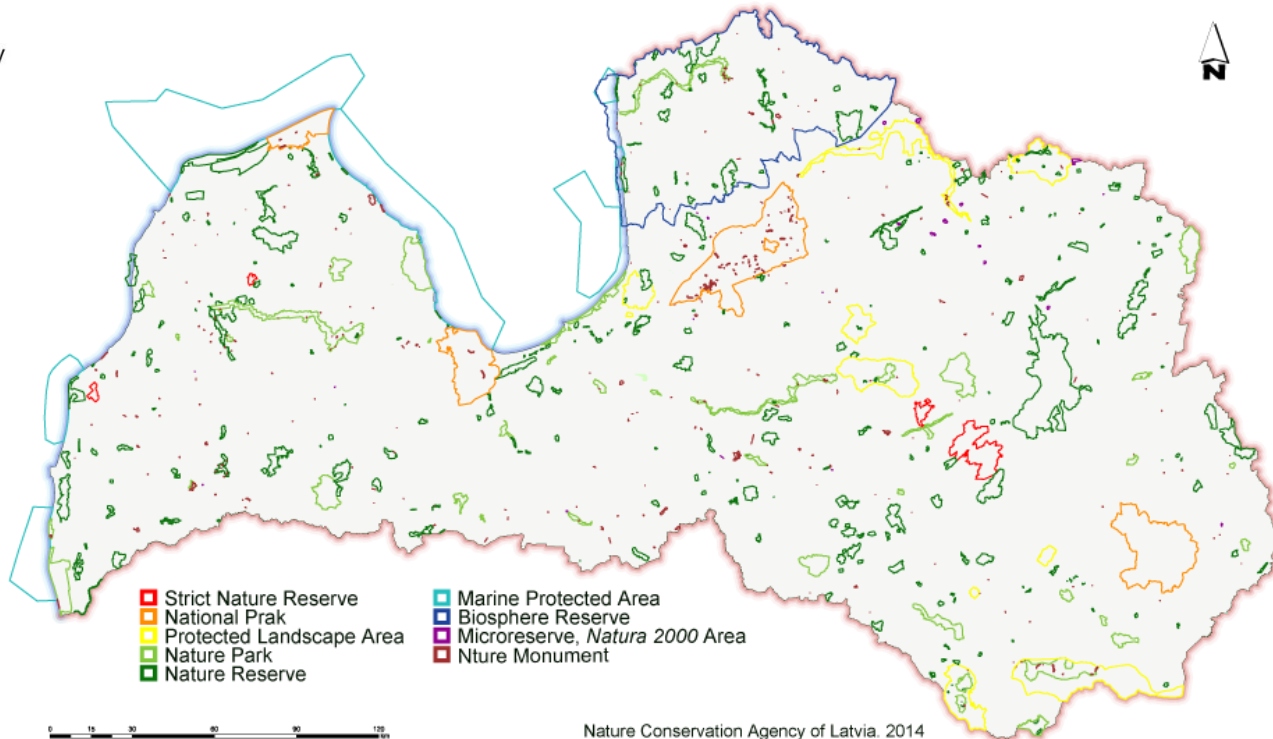
The Nature
Conservation Agency
ensures
implementation of
unified nature
protection policy in
Latvia





Nature
Conservation Agency
Republic of Latvia

Protected Nature Areas of Latvia



Nature Conservation Agency of Latvia. 2014



Nature
Conservation Agency
Republic of Latvia

NCA - functions

Realization

of state policy of nature
conservation, species &
biotopes protection

Implement

the functions of supervision of
„The Convention on
International Trade in
Endangered Species of Wild
Fauna and Flora” (CITES)



Coordination

of administration and management
of specially protected areas

Maintain

records on scientific research in
specially protected areas



Nature
Conservation Agency
Republic of Latvia



LIFE REstore
Sustainable and responsible
management and re-use of degraded
peatlands in Latvia

LIFE 2014 – 2020 program
Climate action sub-program
Climate change mitigation priority area



Nature
Conservation Agency
Republic of Latvia

Why?



Natural bogs are huge carbon
reservoir



Degraded peatlands causes
significant GHG emissions



Nature
Conservation Agency
Republic of Latvia

Why (2)

- Not standard approach and principles of management of degraded peatlands;
- Information on the areas, location, classification is inadequate;
- There is a need for fast, reliable, comprehensive, high resolution and spatially clear data on degraded peatlands;
- Improvements for GHG inventory.



Nature
Conservation Agency
Republic of Latvia

REstore: main objective

establishment of a decision support system
for responsible and sustainable degraded
peatland re-use and management in Latvia



Nature
Conservation Agency
Republic of Latvia

REstore: main actions

- To define the **criteria for classification** of degraded peatlands and determination of **optimal management approach**
- To perform an **inventory** of degraded peatlands and to develop a database of degraded peatlands
- To **approve** the **methodology for GHG emissions accounting** in accordance to IPCC guidelines “Wetlands” in order to **elaborate** country **specific emission factors** and contribute to National GHG Inventory improvements
- To **develop a decision support tool** – a map based land use **optimization model** for **re-use of degraded peatlands** by combination of multi-criteria methods and GIS systems



Nature
Conservation Agency
Republic of Latvia

REstore: main actions (2)

- To select the **demonstration territories** and perform hydrological and habitat studies, as well as economic assessment of the ecosystems and their services of the territories and adjacent areas
- To **test** and to **demonstrate** the optimisation model by **implementing the scenarios** of land re-use and management **in selected demonstration territories**
- Based on the conclusions derived from practical experience, **to develop set of recommendations** and mechanisms for the application and implementation of developed optimisation model for peatland re-use and innovative approaches in policy-making for peatland management



Nature
Conservation Agency
Republic of Latvia

REstore: inventory



Vegetation inventory of degraded peatland in the Laugas mire, abandoned peatland



Vegetation inventory of degraded peatland in the Vārņēnu mire, abandoned peatland





Nature
Conservation Agency
Republic of Latvia

REstore: approbation of GHG emissions accounting methodology



Field measurements of GHG (CO₂, N₂O un CH₄) in 40 places in Latvia



Nature
Conservation Agency
Republic of Latvia

REstore: team

Coordinating beneficiary



Dabas aizsardzības pārvalde

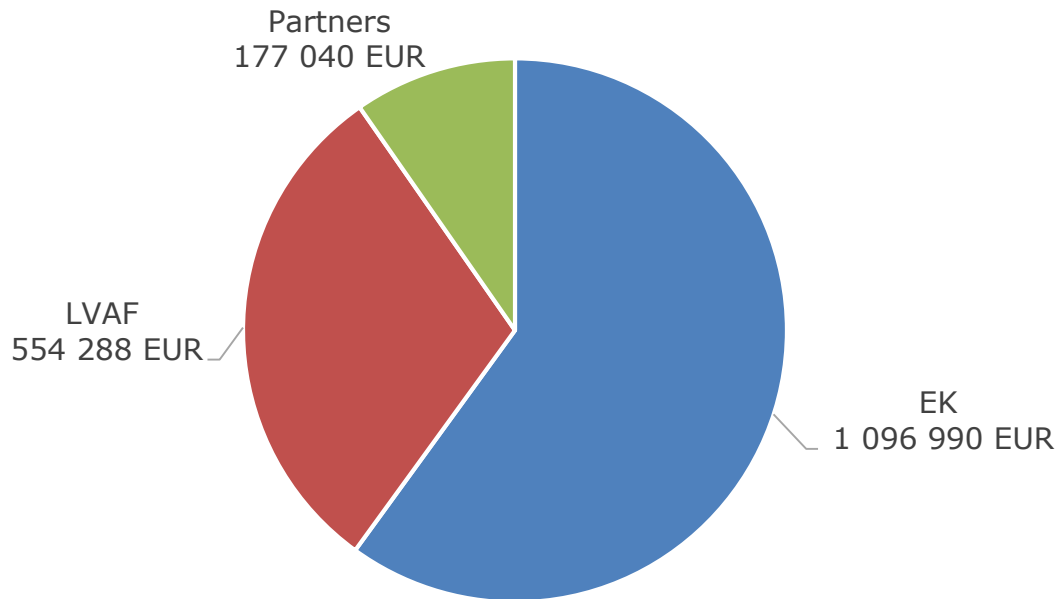
Associated beneficiaries





Nature
Conservation Agency
Republic of Latvia

REstore budget – 1 828 318 EUR





Nature
Conservation Agency
Republic of Latvia

REstore: time schedule

Action		2015				2016				2017				2018				2019				2020			
Action number	Name of the action	I	II	III	IV	I	II	III	IV	I	II	III	IV	I	II	III	IV	I	II	III	IV	I	II	III	IV
		A. Preparatory actions (if needed)																							
A.1	Stakeholder mapping and current situation analysis			■	■																				
A.2	Elaboration of Project Communication Strategy			■	■																				
A.3	Criteria for classification of degraded peatlands and optimal management approach definition				■																				
A.4	Approval of the methodology for GHG emission accounting				■	■	■																		
A.5	Inventory of degraded peatland areas and development of database					■	■	■	■	■	■	■	■												
A.6	Elaboration of the Management Plan, Detail and Technical Designs					■	■	■	■	■	■	■	■												
B. Purchase / lease of land and / or compensation payments for use rights																									
C. Implementation actions (obligatory)																									
C.1	Development of peatland re-use optimisation model - Stage I - Assessment of key processes in demo-sites					■	■	■	■	■	■	■	■												
C.2	Development of peatland re-use optimisation model - Stage II - Economic assessment of ecosystem services in demo-sites						■	■	■	■	■	■	■												
C.3	Development of peatland re-use optimisation model - Stage III - Assessment of the land use scenarios for demo-sites									■	■	■	■												
C.4	Testing of the peatland re-use optimisation model - Implementation of the land use scenarios in demo-sites													■	■	■	■	■	■	■	■				
C.5	LIFE REcommendations for multi-purpose application of support tools for management and re-use of degraded peatlands																	■	■	■	■				
D. Monitoring of the impact of the project actions (obligatory)																									
D.1	Monitoring of the impact of project actions					■	■	■	■	■	■	■	■	■	■	■	■	■	■	■	■				
D.2	Monitoring of the socio-economic impact of project									■	■	■	■					■	■	■	■				
E. Communication and dissemination of results (obligatory)																									
E.1	Project website					■	■	■	■	■	■	■	■	■	■	■	■	■	■	■	■	■	■	■	■
E.2	Public information and education materials					■	■	■	■	■	■	■	■	■	■	■	■	■	■	■	■	■	■	■	■
E.3	Public information and education events					■	■	■	■	■	■	■	■	■	■	■	■	■	■	■	■	■	■	■	■
E.4	Networking with other LIFE and non-LIFE projects					■	■			■				■								■			
E.5	Manual "Methodology for degraded peatland re-use in Latvia"													■	■	■	■	■	■	■	■				
E.6	International Conference for the degraded peatland management and re-use																	■	■	■	■				
E.7	Layman's report																					■	■	■	■
F. Project management and monitoring of the project progress (obligatory)																									
F.1	Project management by NCA					■	■	■	■	■	■	■	■	■	■	■	■	■	■	■	■				
F.2	Audit																						■		
F.3	Compilation of information for indicator tables					■	■	■	■	■	■	■	■	■	■	■	■	■	■	■	■				
F.4	After-LIFE Plan																					■	■	■	■



Nature
Conservation Agency
Republic of Latvia

Thank You for Your attention!

Kaspars Pabērzs

 Baznīcas iela 7, Sigulda, LV 2150

 <http://restore.daba.gov.lv>

 LIFE REstore  @LIFE_REstore  liferestorelv  liferestore